

CONCERNING THE BURIALS FROM THE EARLY IRON AGE SETTLEMENT BUCU – *POCHINĂ*, IALOMIȚA COUNTY

SORIN-CRISTIAN AILINCĂI*, MIHAI CONSTANTINESCU**, ELENA RENȚA***

Abstract: Archaeological investigations at the site from Bucu – *Pochină* carried out between 1989 and 2010 have highlighted the existence of an Early Iron Age settlement that can be ascribed to the Babadag culture (end of 9th c. – beginning of 8th c. BC). A series of four habitation structures containing the bones of five individuals were found there. In this article we have endeavoured to explore these situations as in-depth as possible, presenting the archaeological materials and documentation and completing the anthropological analysis of three of the individuals buried in this site.

The study of the Bucu burials adds to the data known so far about the dead deposited in settlements in the Early Iron Age in the northern Balkans, especially in the Lower Danube region. The finds in this site consolidate the idea that these practices existed all over the area ascribed to the Babadag culture, as well as the diversity of archaeological contexts, considering the various types of set-up, number and state of representation of the dead, deposition practices and association with certain objects (pottery vessels and fragments, animal bones, construction remains).

Keywords: Early Iron Age, Babadag culture, burials in settlements, Lower Danube, blunt force trauma.

INTRODUCTION

Most of the Early Iron Age at the Lower Danube became known especially due to researches at Babadag settlement¹. Since the end of the '80s, the interest of specialists in this period has been rising significantly, and new archaeological

* “Gavrilă Simion” Eco-Museum Research Institute, no. 32 Progresului Street, 820009, Tulcea, Romania; e-mail: sailincai@gmail.com. Research financed through project “MINERVA – Cooperation for elite career in doctoral and postdoctoral research”, contract code: POSDRU/159/1.5/S/137832, project co-financed from the European Social Fund through the Sectoral Operational Programme Human Resources Development 2007–2013.

** “Francisc I. Rainer” Institute of Anthropology, no. 8 Eroii Sanitari Avenue, district 5, PO Box 35, 050474, Bucharest, Romania; e-mail: mihaic2005@yahoo.com.

*** Ialomița County Museum, no. 30 Matei Basarab Avenue, Slobozia, Romania.

¹ Morintz 1964; Morintz 1986; Morintz 1987; Morintz, Jugănaru 1995; Morintz, Jugănaru, Munteanu 1995.

excavations started in sites like Niculițel², Satu Nou³, Bucu⁴, Garvăn⁵, Siliștea⁶, Enisala⁷, Revărsarea⁸, Țibrinu⁹, Telița¹⁰, Jijila¹¹, etc. These new investigations brought substantial contributions to our knowledge of the communities that lived in the Lower Danube region in the early 1st millennium BC¹².

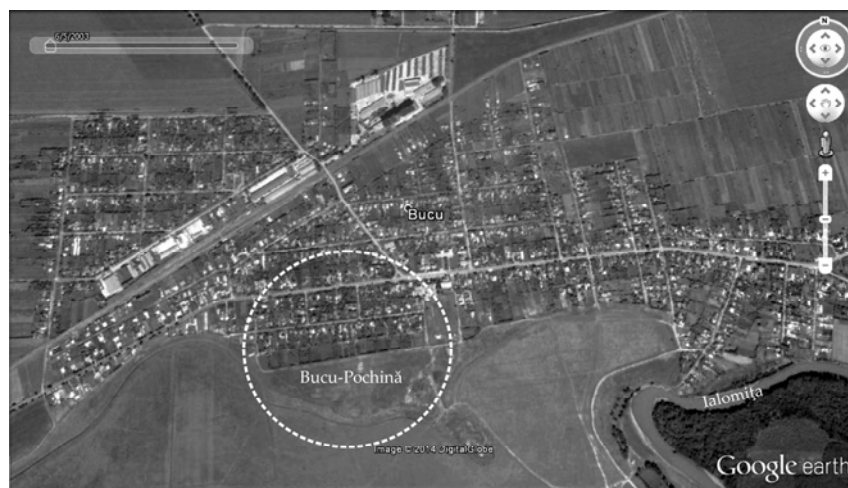


Fig. 1. Bucu – Pochină site, Ialomița County.

One of the most interesting aspects of the period concerns the funerary practices. In overall, the Early Iron Age in the Carpathian-Danubian region exhibited a categorical shift in funerary practices, as the number of burials radically dropped compared to the previous period¹³. The necropolises identified so far in the above-mentioned areal are scarce, contain a limited number of individuals and exhibit rather various rites and rituals¹⁴. The overall image of the attitude towards the dead was

² Topoleanu, Jugănaru 1995.

³ Irimia, Conovici 1993.

⁴ Rența 2008.

⁵ Jugănaru 1997.

⁶ Harțuche, Anastasiu 1992; Sîrbu, Pandrea 1994.

⁷ Lăzurcă, Mănuclu-Adameșteanu 1984; Ailincăi, Constantinescu 2008; Ailincăi *et alii* 2011; Ailincăi, Mihail, Constantinescu 2013.

⁸ Simion 2003; Ailincăi 2013a.

⁹ Ailincăi, Dobrinescu 2006.

¹⁰ Baumann 1995; Ailincăi 2010a.

¹¹ Sîrbu, Ailincăi, Simion 2008.

¹² Ailincăi 2013a; Ailincăi 2013b.

¹³ Vulpe 2008, p. 269 et seq.

¹⁴ See, for instance, the necropolises or isolated burials from: Bobda, Ticvanul Mare, Caransebeș – Balta Sărată, Moldova Nouă – *Cariera de banatite*, Hinova (Gumă 1993, p. 168 et seq.), Balta Verde, Bistreț, Damian, Salcia, Sărata, Vârtoș (Berciu 1939; Berciu, Comșa 1956; Chicideanu 1986; Chicideanu 1999–2001; Hănsel 1976), Zimnicea (Alexandrescu 1977), Sboryanovo (Stoyanov 1997), Meri (Moscalu

partially completed after the research and publication of new finds that point to the existence of practices of deposition, exposure and manipulation of human bodies in settlements, most often using deallocated habitat structures (pits or dwellings). Such situations are encountered all over the Lower and Middle Danube region, in different cultural areas, but concentrate mostly in the settlements ascribed to the Babadag culture¹⁵.

In fact, in most EIA settlements at the Lower Danube where extended investigations were carried out, such set-ups containing human bones were found. This is also the case of the site at Bucu – *Pochină*, Ialomița County. The site was identified over an approx. 8 hectares area in the S-SW of Ialomița River (Fig. 1). Begun in 1989, the archaeological investigations coordinated by E. Rența, continued until 2010, bringing to light settlements from various historical ages¹⁶. Amongst them, the EIA settlement, ascribed to the Babadag culture, stands out through its numerous surface dwellings, huts and pits of various uses, some of them containing human bones¹⁷ (Fig. 2).

COMPLEXES WITH HUMAN BONES. CATALOGUE OF THE FINDS

From Bucu – *Pochină* site we have information on four archaeological complexes containing human bones, three of them already mentioned in the specialised literature¹⁸:

1. During the 1989 campaign, in S I, located east of the investigated area, a pit (Pit 1) was identified; for its complete excavation, area C-A was drawn. In the filling, a human skull was found (*individual 1*)¹⁹. The pit contained a few atypical EIA pottery fragments.

2. Pit 1, S XVIII/2005 was excavated up to the depth of 2.30 m. Its upper part was oval-shaped, of 1.60 m maximum diameter, and its lower part was circular, 3.80 m in diameter. The complex was partially affected by the setup of a hut dated to 4th–3rd c. BC, as well as by another pit dug in its western side during the Getae period.

1976, p. 77–86; Moscalu 1977–1979, p. 163–169), Cucorâni, Trifești, Vaslui – *Curtea Domnească*, Cotu Morii – *Toloaca*, Iași – *Crucea lui Ferent*, Volovăț, Braniște (László 1994; László 2003), Prăjeni (Ursulescu, Șandurschi 2004, p. 45–56), Foltești (László 1986; László 2006), Hansca (Levițki 1994), Alcedar, Climăuții de Jos, Poiana, Mateuți, Mihuleni, Saharna – *Dealul Mănăstirii*, Saharna – *Gura Hulboca*, Saharna – *Țiglău*, Țarevka (Kašuba 2000; Niculiță, Nicic 2014), etc.

¹⁵ Ailincăi 2008a. This observation may be due to the current state of research. It is possible that the future archaeological excavations bring forth new data about this phenomenon.

¹⁶ Păunescu, Rența 1993, p. 193–197; Păunescu, Rența 1994, p. 9; Păunescu, Rența 1996, p. 16; Păunescu, Rența 1998, p. 10; Păunescu, Rența 1999, p. 18; Păunescu, Rența 2000, p. 21; Rența 2002, p. 70–71; Rența 2003, p. 63–64; Rența 2004, p. 62; Rența, Coman 2005, p. 83–84; Rența, Coman 2006, p. 98–100; Rența, Munteanu 2007, p. 85–87; Rența, Munteanu, Coman 2008, p. 57–58.

¹⁷ The EIA finds from Bucu are described in detail in Rența 2008.

¹⁸ Rența 2008, p. 75 et seq.

¹⁹ The skull was handed in for analysis, shortly after it was found, to Mrs. Laurenția Georgescu (who worked at “F.I. Rainer” Institute of Anthropology and at the National History Museum of Romania, Bucharest), but it was lost before the anthropological analysis could be performed.

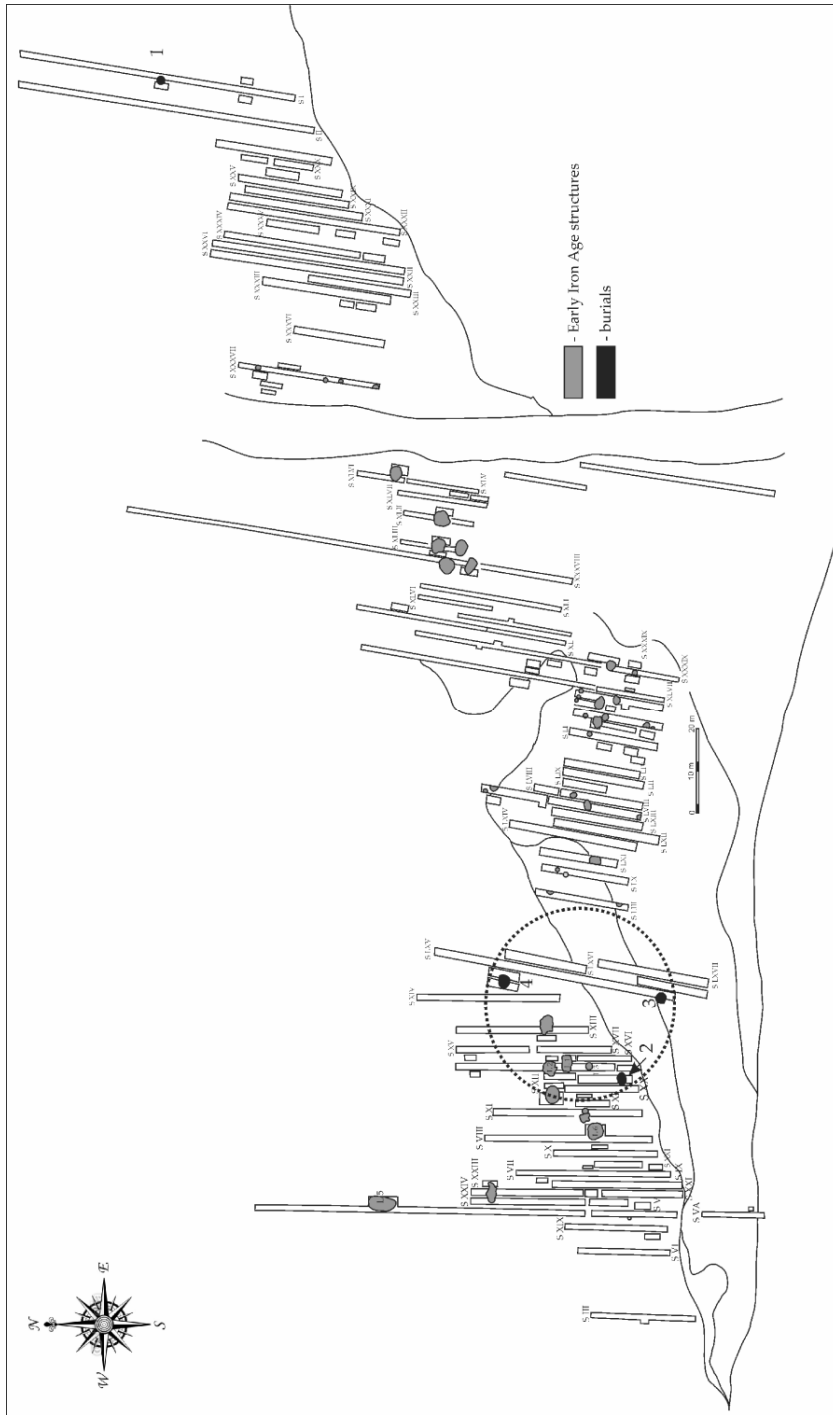


Fig. 2. Layout of archaeological investigations at the site from Bucu – *Pochină*, Ialomița County (after Rența 2008).

At 1.75–2.00 m depth, in the pit's filling, in the central area, over a surface of approx. 1m in diameter, a hard earth layer of greyish black colour was dug out. Underneath it laid a female skeleton (*individual 2*), aged 33–46, in a flexed position on the left side, aligned NNE-SSW. The skull, arms, part of the ribs, and one tibia had been preserved in anatomical position (Fig. 3). The rest of the bones, and several pottery fragments from a single kitchenware item (Fig. 4/1) were recovered from the above-mentioned Getae pit²⁰.

A small vessel was found near the individual's left arm (Fig. 4/15). In addition to these objects, the pit also contained animal bones, lumps of adobe and numerous EIA pottery fragments (Fig. 4).

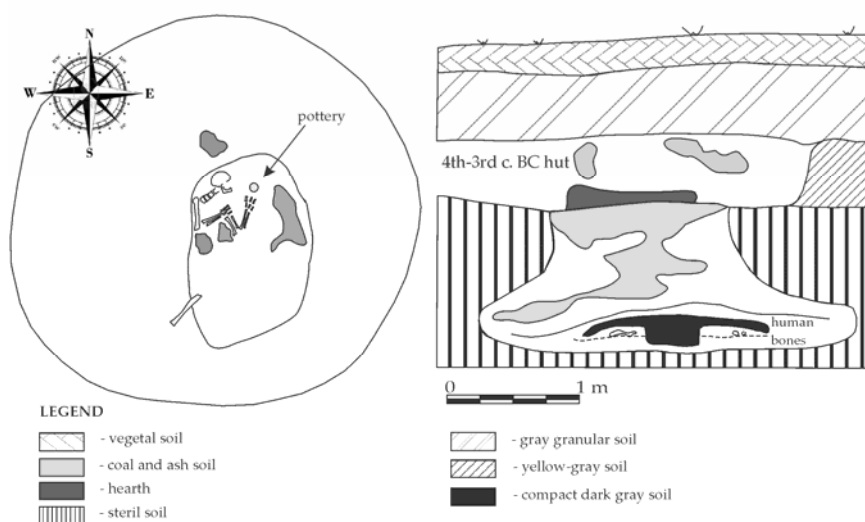


Fig. 3. Layout and profile of pit 1, S XVIII (after Rența 2008).

3. Pit 1, S LXV/2006 was discovered near the margin of the current terrace, it was 1.35 m deep, with oval-shaped opening (1.45 × 1.65 m) and base (2.40 × 2.60 m). The upper part of the complex was covered with grayish-yellowish dust, up to 0.25 m thick, which probably appeared after construction of a kiln in Late Iron Age. Under this level, the earth that filled the pit was loose and contained ash, coal, adobe, fragments of hearth and animal bones, as well as several EIA pottery fragments from which a coarse paste kitchenware item was recovered and restored (Fig. 5/8). Close to the bottom of the pit, under a packed earth lens (approx. 10 cm thick), a human skeleton (*individual 3*) was found in anatomical position, deposited flexed, on its left side, head to SE²¹.

²⁰ Rența 2008, p. 75–76.

²¹ Rența 2008, p. 76, Fig. 7/1, 24/1, 99/1. The human bones from this complex were handed over to colleague C. Muja for study, but could not be retrieved afterwards for analysis.

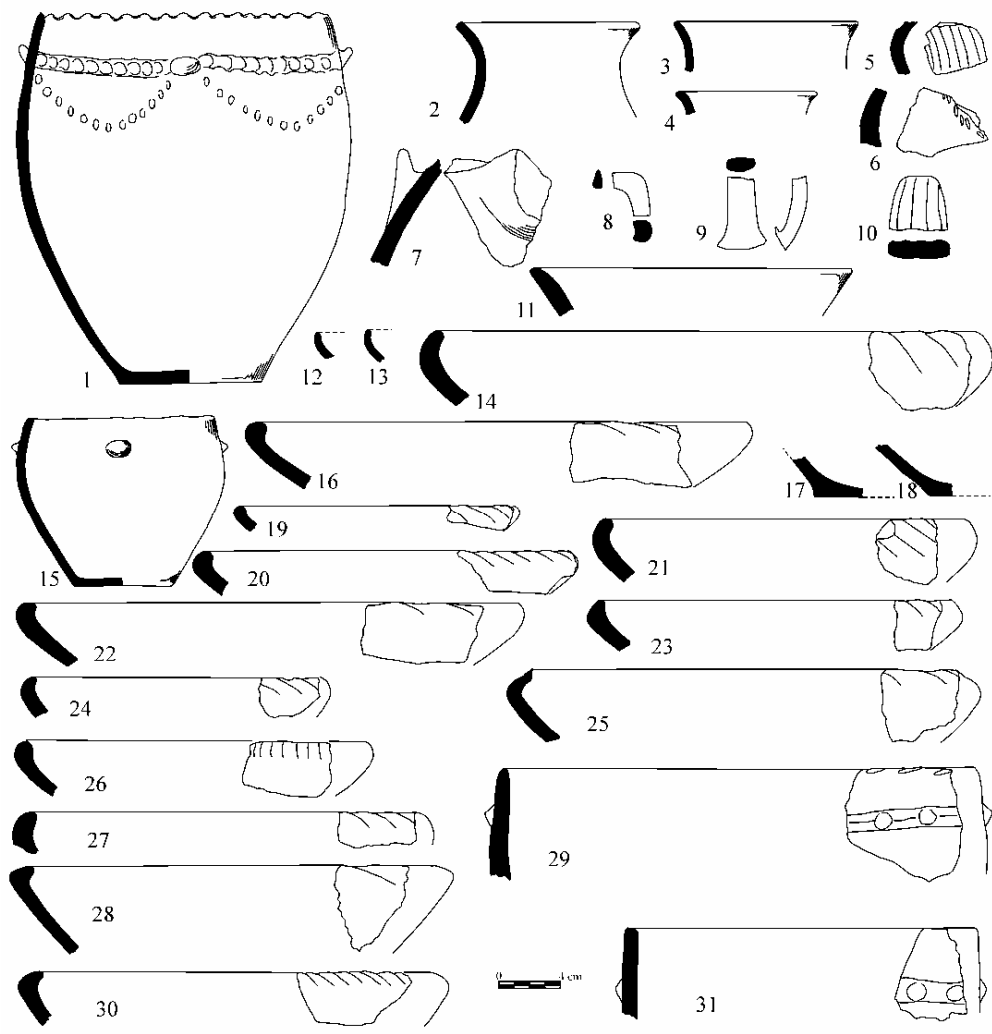


Fig. 4. Pottery found in pit 1, S XVIII.

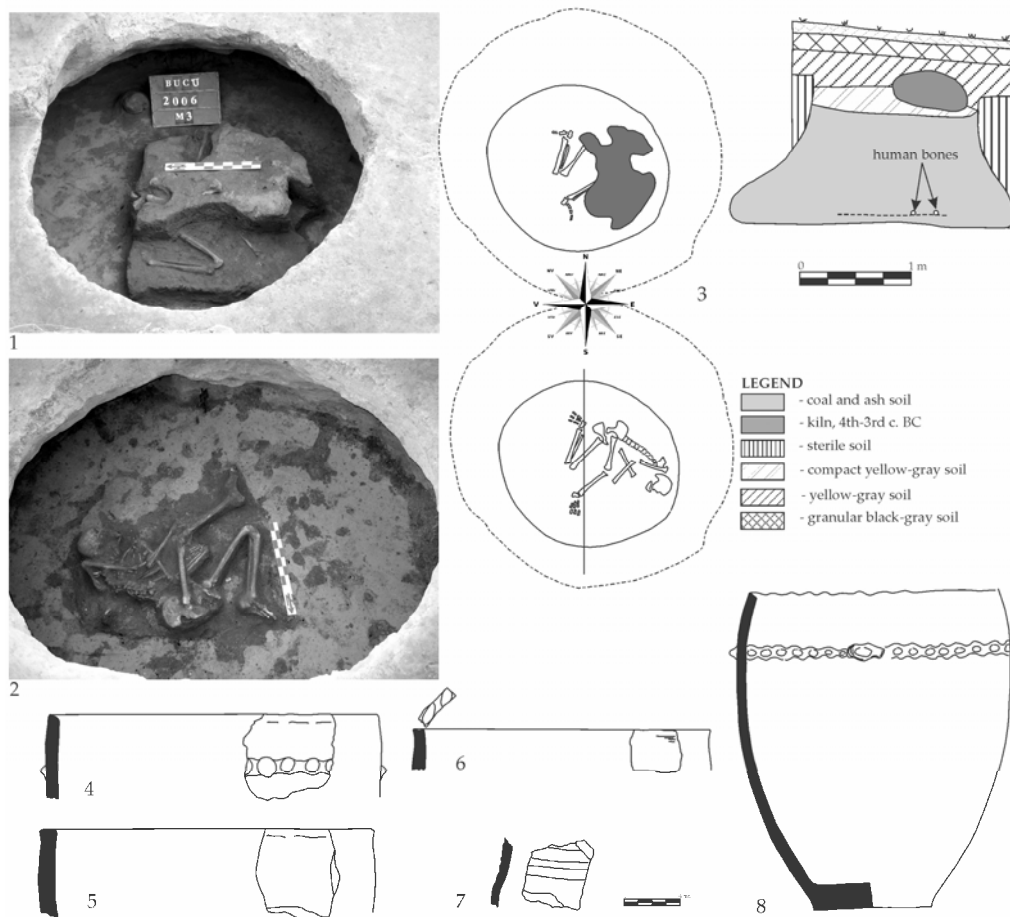


Fig. 5. Pit 1, S LXV / 2006.

4. Hut 12, S LXV was investigated in 2006–2007. It was approx. circular in shape (3.30×3.10 m) and was dug up to 0.40 m deep. Two human skeletons were found (numbered M4 and M5, respectively, by the authors of the research) here. The first individual (*individual 4*, female, aged 39.4 to 45) was deposited in supine position, aligned NE-SW, hands close to the body and the lower right limb strongly flexed from the knee. The second individual (*individual 5*, male, aged 33 to 46) was deposited on the left side, aligned SE-NW, leg bones slightly bent from the knee, left arm flexed from the elbow and hand bones at head level, while the right arm was at some distance from the body²² (Fig. 6).

²² Rența 2008, p. 76–77, Fig. 22/3; 26/1.



Fig. 6. Bucu – *Pochină*, hut no. 12.

ANALYSIS OF THE FINDS

Place of deposition

In the layout of the archaeological research at Bucu (Fig. 2) we can see various areas of concentrated habitat structures (pits and dwellings) from the Early Iron Age. In relation to them, three of the burials (cat. no. 2–4) are situated in the western sector of the investigated area, with several hut-like dwellings, while the pit with the human skull (cat. no. 1) is somewhat isolated from the EIA traces of inhabitation, to the northeast. Like in other settlements, we noticed a special area intended for the deposition of the human bodies²³.

²³ Ailincăi 2008a.

Out of the four recorded situations, the human bodies or parts thereof (the skull) were deposited in relatively large pits in three of the cases, and in a hut, in another case. The pits (at least the two graphically documented pits, Fig. 3; 5/3) were dug so that the diameter of the lower part was larger than the upper part. This is a specific characteristic of the structures set up for storage of food supplies²⁴. It's interesting that the archaeological material found in the filling of these pits is rather diverse: pottery sherds (Fig. 3; 4/4–8), stones, adobe, animal bones (Table 1), etc., mostly fragmented. Such cases are frequent at the Lower Danube, in settlements such as Babadag, Enisala, Niculițel, Suceveni or Satu Nou²⁵.

Deposition of human bodies in dwelling-like structures²⁶ is scarcer. Such situations, however, have been encountered at the Lower Danube in sites such as Niculițel – *Cornet*²⁷, Jurilovca–*Orgame*²⁸ or Enisala – *Palanca*²⁹, considered places intended for deposition/decomposition of the bodies – houses of the dead³⁰.

Complete and partial bodies

The various state of representation of the bodies has repeatedly drawn our attention to such finds: complete skeletons in anatomical position, parts of bodies, or fragmented bones. At the settlement from Bucu, most of the skeletons of the five individuals are almost complete, preserving their anatomical position, except for the remains of *individual 2*, disturbed post deposition, and the skull deposited in pit 1, SI (cat. no. 1). The anatomic position of these individuals indicates possible primary deposition in these complexes or at least within a shorter period of time than necessary for joints to decay. The absence of some of the bones or the abnormal position of some of them could be the result of the body disposal, soil pressure, subsequent deliberate or unintentional interventions, of the moves occurred during decomposition or of the natural decay of some of the smaller bones, etc.³¹

Regarding the deposition of skulls, we take note that such cases have multiplied. To this effect, we need to mention the four skulls without mandibles deposited in the filling of a pit dug outside the fortification from Babadag³², or at

²⁴ See for example Frere-Sautot 2006.

²⁵ See Ailincăi 2008a.

²⁶ Numerous lumps of adobe with twigs and reed impressions (remains of the overstructure – walls, roof) were found in these set-ups, bringing an argument in favour of considering them dwelling-like structures.

²⁷ Topoleanu, Jugănaru 1995; Ailincăi 2008b.

²⁸ Ailincăi, Mirițoiu, Soficaru 2003; Ailincăi, Mirițoiu, Soficaru 2006.

²⁹ Ailincăi, Constantinescu forthcoming.

³⁰ Ailincăi 2013b, p. 235 et seq.

³¹ Duday 1995, p. 36 et seq.

³² Jugănaru, Ailincăi 2003; Ailincăi *et alii* 2006.

the base of the *vallum* at Jijila settlement, where we found a skull and a femur³³. Depositions of skulls have also been identified on some of the platforms/floors at Garvăn – *Mlăjitul Florilor*³⁴ and Satu Nou – *Valea lui Voicu*³⁵, to which we can add the find of a skull with mandible in a pit at Niculițel – *Cornet*³⁶ and of some whole or fragmentary mandibles in pits at Babadag, Garvăn – *Mlăjitul Florilor*³⁷ and Revărsarea – *Dealul Tichilești*³⁸. We believe that the deposition only of parts of a body is deliberate, and the rest of the body parts received different treatment (incineration, inhumation in other places, preservation in dwellings or simply abandonment). We can also explain in this way the finds of isolated bones, especially skulls and limbs. Unarticulated bones depositions are certainly the result of secondary actions applied *peri-* or *postmortem* on the bodies, representing complicated multi-stage treatment measures.

Data on the number of individuals

In a recent analysis of the finds, we noticed that the number of individuals deposited in a complex varies from case to case³⁹. We found the most spectacular situation at Jurilovca–*Orgame*, where we identified the bones of no less than 15 individuals⁴⁰. From the analyzed materials⁴¹, in three of the complexes at Bucu one individual was deposited in each, and two individuals were deposited only in hut 12 (cat. no. 4).

Placed or thrown?

Unlike other situations documented so far, most of the human osteological remains found in the EIA settlement from Bucu were on the bottom or very close to the bottom of the set-ups, except for the skull in pit 1/S I (cat. no. 1), which was in the filling. This suggests certain concern for preparing a special place for the deposition of the bodies, or the change in use of some of the structures put up for habitat or storage.

In the overall finds from Bucu, complexes numbered 2 and 3 in the catalogue hold a special place. In these two cases, the dead were deposited in

³³ Sîrbu, Ailincăi, Simion 2008.

³⁴ Jugănaru 1997; Jugănaru 2005; Ailincăi 2008a.

³⁵ Irimia, Conovici 1993; Irimia 2003.

³⁶ Ailincăi 2008b.

³⁷ Ailincăi 2008a.

³⁸ Ailincăi 2010a; Ailincăi 2013a.

³⁹ Ailincăi 2008a.

⁴⁰ Ailincăi, Mirițoiu, Soficaru 2003; Ailincăi, Mirițoiu, Soficaru 2006.

⁴¹ We need to point out that the fauna found at the site from Bucu was not analysed, therefore it is possible it contains human bones, too.

anatomical position, probably on the bottom of the pits, in the central area. The flexed position of the bodies (both on the left), the whole vessels (Fig. 4/1, 15; 5/80) and the layers of packed earth noticed above the skeletons point out to the existence of special practices that accompanied these depositions. Proofs of such rituals are also documented in other cases in Babadag culture areal. In this respect we can mention the collective burial from Suceveni – *Stoborăni*, where the author of the investigation indicated that the bodies were found in a layer of ash mixed with adobe, along with a bovid skull⁴². Another suggestive case in this regard is the collective burial from Jurilovca–*Orgame*, where an ash layer was above the bodies, containing fragments from approx. 80 vessels, animal bones, a human humerus and a coxal bone. A similar situation was indicated in pits 41, 43, 44 and 46 from Satu Nou – *Valea lui Voicu*⁴³, as well as Niculițel – *Cornet*⁴⁴ or Babadag⁴⁵.

Unlike these two cases, the position in which *individuals 4* and *5* were found on the floor of hut 12 (cat. no. 4) does not denote special attention given to the placement of the dead. In fact, in these dwellings that we consider special set-up places for the deposition of the bodies⁴⁶, the position, alignment and state of representation of the individuals is diverse, as also visible in the finds from Niculițel – *Cornet*⁴⁷ and Jurilovca–*Orgame*⁴⁸. The skull from pit 1/S I found in the filling is also a special case, as it seems it was “thrown in”.

Regarding the alignment of the dead, though we cannot consider it a standard, not long ago we noticed that NNW-SSE, NW-SE and E-W depositions are the exclusive characteristic of the skeletons in supine position, and NNE-SSW, SSW-NNE and SW-NE alignments exclusively apply to the bodies deposited in a flexed position. However, we underline that the most frequent alignment for both body positions is N-NE⁴⁹.

ANTHROPOLOGICAL DATA

State of conservation and representation

Unfortunately, due to events independent of our will, we could only analyze the osteological remains of *individuals 2, 4* and *5*⁵⁰. Their skeletons are very well

⁴² Dragomir 1996; Ailincăi, Constantinescu, Adamescu 2014.

⁴³ Irimia, Conovici 1993, p. 53, 89, 91, 94.

⁴⁴ Topoleanu, Jugănaru 1995, p. 204–205; Ailincăi 2008b.

⁴⁵ Jugănaru 2005, p. 33.

⁴⁶ Ailincăi 2008a; Ailincăi 2013b.

⁴⁷ Ailincăi 2008b.

⁴⁸ Ailincăi, Mirițoiu, Soficaru 2003; Ailincăi, Mirițoiu, Soficaru 2006.

⁴⁹ Ailincăi 2013a. Our analysis included the finds from Bucu.

⁵⁰ To this effect, see notes 19 and 21.

preserved⁵¹. The state of representation⁵² of the bones is optimal, given that only small bones are missing (in general, small bones from the rib cage, bones of the hands and feet). It's very likely that these missing bones are due to incomplete gathering of the bones from the site and not to intended selection of the deposited bones.

For *individual 2* (cat. no. 2), all broken and missing bones are recent. So is the case of *individual 4*, whose most fractures are recent (occurring during the onsite investigation and/or storage). Only parts of the crania, ribs, proximal and distal thirds of the femur, tibia and fibula diaphyses are fragmented due to pressure of the soil. Most of the fragmentations of *individual 5* are also of recent occurrence; only parts of the frontal bone (affected by violent trauma, see below "Signs of violent death"), some ribs, ilia and the distal third of the left tibia diaphysis are fragmented due to soil pressure.

Part of the missing bones in the skeleton of *individual 5* seems to be the result of a special funerary treatment. As shown in the photo taken on the site, the bones of the right arm are not in connection with the rest of the body. They were found at approx. 0.50–1m distance from their anatomical position. The humerus, forearm bones and the hand bones are, however, articulated (Fig. 6). The right arm was probably separated perimortem from the body and deposited near it, which would explain the absence of right clavicle and scapula. This treatment can also explain the missing distal thirds of the right ulna and radius. The absence of right hand metacarpals seems to be related to the gathering of the bones from the site, while the proximal and medial phalanges are only partially preserved.

Table 1

Bucu. Sex, age, stature and inventory (stature estimated after Bach 1965)

Bucu	Sex	Age	Stature (cm)	Other materials
Ind. 2	F	33–46	-	3 animal bone fragments; 3 snail shells; adobe fragments.
Ind. 4	F	39.4–45	-	6 animal bone fragments.
Ind. 5	M	33–46	160.36±4.8	One pig ankle bone showing signs of usage (polished) on the sides; one pottery fragment; adobe fragments.

The bones show few taphonomic changes⁵³. Especially small parts of the surface of the long bones exfoliated due to prolonged exposure to the sun during the excavation.

⁵¹ Connell, Rauxloh 2003, p. 2; Connell 2008, p. 9.

⁵² Steckel *et alii* 2006, p. 19.

⁵³ Stodder 2008, p. 71–114.

All analyzed skeletons belong to adult individuals aged 33 to 46⁵⁴, two females and one male⁵⁵ (Table 1). One of the female skeletons, *individual 4*, also shows pronounced signs of parturition⁵⁶.

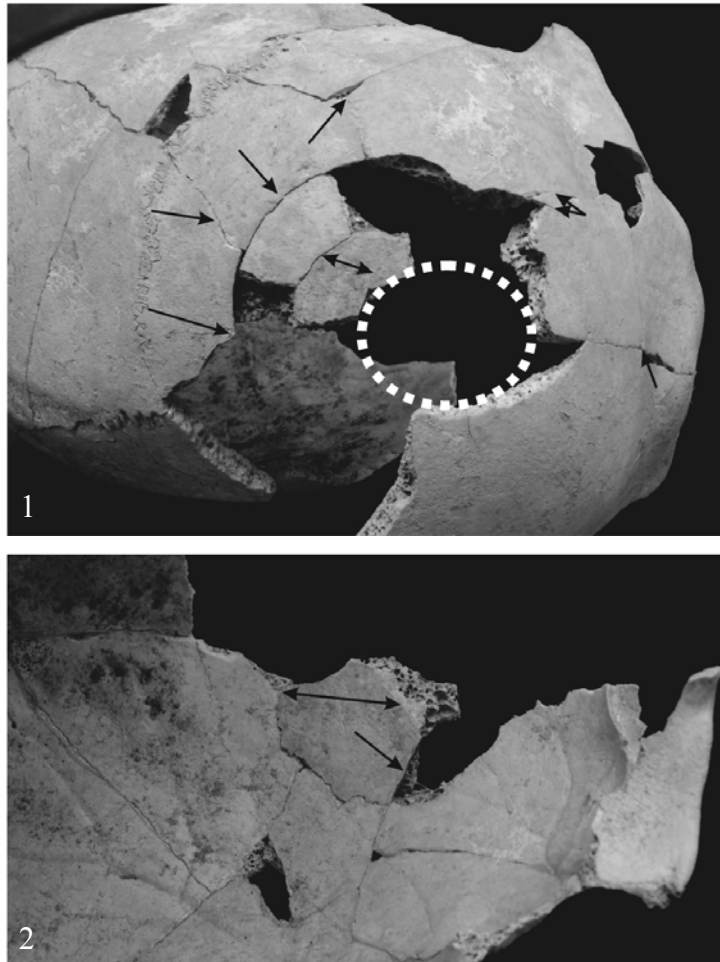


Fig. 7. 1. View from the upper norm of the skull of *individual 5* (the dots circle the presumed area of the blow; the black arrows indicate the radiating fractures resulted from the blow); 2. Endocranial view of the skull of *individual 5* (black arrows indicated the area exfoliated from the bone, as a result of the impact).

⁵⁴ Estimated based on cranial synostosis (White, Black, Folkens 2012, p. 391–393, fig. 18), evolution of the sternal rib ends (Loth, Ișcan 1989, p. 106–118), evolution of pubic symphysis (White, Black, Folkens 2012, p. 394–397, fig. 18/12) and evolution of auricular surface (White, Black, Folkens 2012, p. 400–404, fig. 19/9).

⁵⁵ Estimated based on cranial (Buikstra, Uberlaker 1994, p. 19–21) and postcranial (Steckel *et alii* 2006, p. 19–24) traits.

⁵⁶ Estimated according to Steckel *et alii* 2006, p. 25, fig. 23.

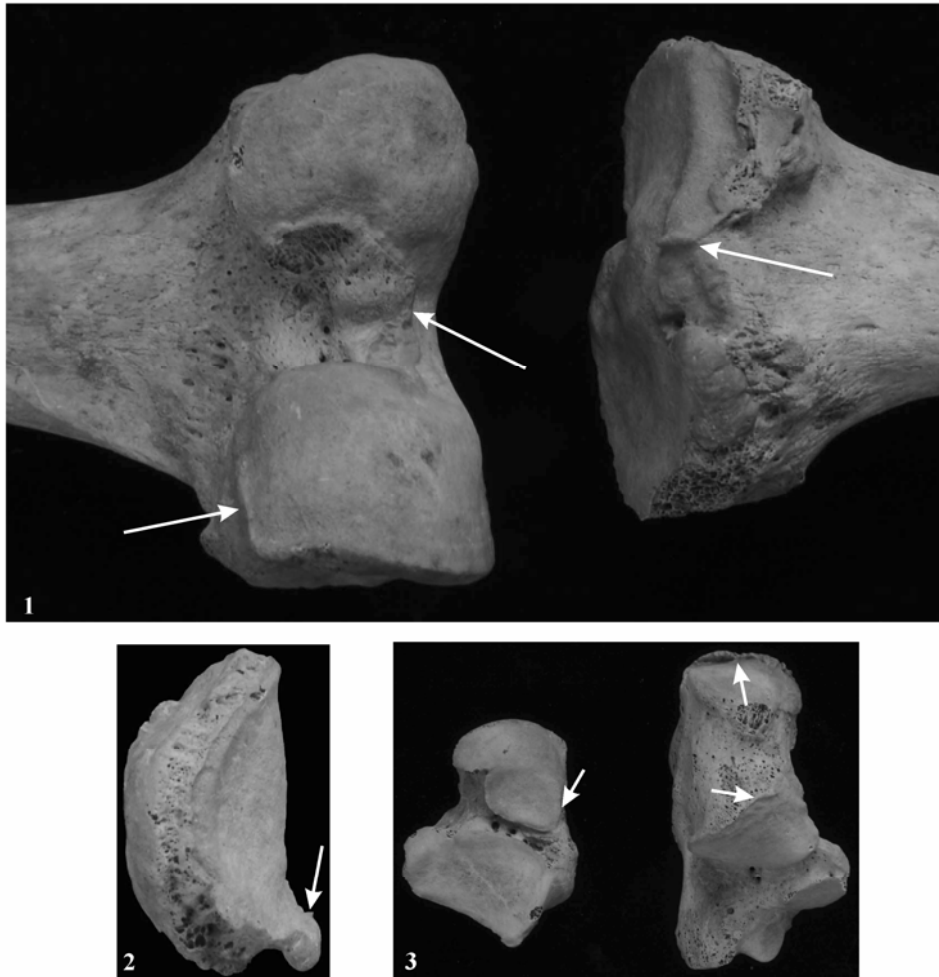


Fig. 8. 1. Posterior view of the right knee joint; 2. Medial view of the right patella; 3. Right talus and calcaneus of *individual 5* (the white arrows point to the development of marginal osteophytes on the epiphyses and of the enthesophytes on Achilles' tendon).

Pathology

The sample exhibits high incidence of caries (22.22%), *antemortem* tooth loss (48.78%) and dental abscesses (4.88%)⁵⁷. *Individuals 4* and *5* show pronounced alveolar resorption, and *individual 5* also has pronounced dental calculus.

⁵⁷ Steckel *et alii* 2006, p. 15–16, fig. 10.

Table 2

Bucu. Distribution of dental cavities and abscesses
(score: 1 – occlusal cavities; 2 – interproximal cavities; 5 – dental abscesses)

Individual no.	Left									Right								
	M ₃	M ₂	M ₁	PM ₂	PM ₁	C	I ₂	I ₁	I ₁	I ₂	C	PM ₁	PM ₂	M ₁	M ₂	M ₃		
Ind. 2		1	2	5									5	1				
Maxilla	M ³	M ²	M ¹	PM ²	PM ¹	C	I ²	I ¹	I ¹	I ²	C	PM ¹	PM ²	M ¹	M ²	M ³		
Ind. 2			2	2	2									2				
Ind. 4															2			
Ind. 5	2	2																

Table 3

Bucu. Additional articular facets of the tibia (1 – medial articular facet; 2 – lateral articular facet) and talus (3 – medial articular facet; 4 – lateral articular facet; 5 – anterior extension of the medial articular surface; 6 – medial extension of the trochlear surface). Score: 0 – not observed; 1 – absence of trait; 2 – presence of trait

Localization	1		2		3		4		5		6	
	right	left	Right	left	right	left	right	left	right	left	right	left
M 2	2	0	2	0	0	0	0	0	0	0	0	0
M 4	0	0	0	0	1	1	2	2	2	2	2	2
M 5	2	2	2	2	1	1	2	2	2	2	1	1

All the identified cavities are bilateral, on molars and premolars of both the maxilla and mandible, and the abscesses are bilateral, on mandibular premolars of *individual 2*.

The cavities are occlusal and interproximal⁵⁸. The occlusal cavities are only on the mandible (Table 2). Traces of enamel hypoplasia⁵⁹ are present on the mandibular canines of *individual 5* and on all maxillary canines and incisors of *individual 2*.

The skeleton of *individual 5* shows healed bilateral signs of *cribra orbitalia* and *cribra cranii*⁶⁰. All joints show slight signs of osteoarthritis⁶¹, more pronounced on the lumbar vertebrae, distal femoral epiphysis of *individual 4* and on the knee joints and leg bones of *individual 5*. None of the identified bones shows signs of osteoperiostitis⁶².

All skeletons show additional articular facets on the distal tibial epiphysis and on the talus, mainly due to the individual's repeated crouching during his lifetime⁶³. These seem to be more pronounced in the male individual (5) and less pronounced in the older, female individual (4) (Table 3).

⁵⁸ Brothwell 1981, p. 155, fig. 6/12, 14.

⁵⁹ Steckel *et alii* 2006, p. 15–16, fig. 10.

⁶⁰ Steckel *et alii* 2006, p. 12–14, fig. 8–9.

⁶¹ Steckel *et alii* 2006, p. 31–33, fig. 27–29.

⁶² Steckel *et alii* 2006, p. 30–31, fig. 26.

⁶³ Barnett 1954; Boule 2001.

Signs of violent death

The anterior part of the frontal bone of *individual 5*, approximately between the coronal suture and the left frontal eminence, shows signs of an unhealed perimortem injury. This seems to be the result of a blow with a blunt object that caused radiating fractures on the frontal and parietal bones (Fig. 7/1). Since the affected area is missing parts due to ancient and recent occurrences, we cannot estimate what type of object was used to administer the blow. The skull is also strongly deformed due to soil pressure, making it impossible to restore it back to its initial condition. The injury is confirmed by the endocranial exfoliated fragments (Fig. 7/2), indicating that it occurred inwardly and was definitely deadly due to the force and damage it caused.

Radiating fractures appear on the posterior part of the occipital bone, too, but many fragments from this part are missing and it's difficult to estimate whether a second blow was administered.

Due to the manner of deposition, its right arm detached perimortem from the body and placed at a distance from its anatomical position (Fig. 6), we can assume the existence of another trauma that led to its separation (the clavicle and scapula were not deposited in the burial).

Considering the skeleton's good state of representation, the absence from ancient times of a segment of the distal third of the left tibial diaphysis could also be linked to a violent episode, though there are no visible traces of how this fragmentation occurred.

Signs of *perimortem* violence were also recorded for several skeletons deposited in Babadag culture settlements. From the eponymous settlement, signs of violence were found on skulls 1 and 3 of pit 3, S VI/2004, from adult females⁶⁴. At Jurilovca–*Orgame*, skeletons no. 5 (adolescent female), no. 6 (adult male), and 9 (adolescent, indeterminable sex) also showed signs of violent death⁶⁵.

Similar cases were also encountered at Niculițel – *Cornet*, in pit 1, S V/2000, skeleton 1 (female, 14–15 years of age) and skeleton 4, S K II/2000 (indeterminable sex, adolescent-adult)⁶⁶. The recent finds from the settlement at Enisala – *Palanca*, partially published⁶⁷, are interesting for the high incidence of perimortem sharp force injuries, mainly to adult males. With almost no exception, these blows are fatal. The injured men also showed numerous signs of healed injuries (fractures of the cranial and nasal bones, ribs and long bones), as well as signs of infections on the lower limbs bones.

⁶⁴ Ailincăi 2010b, p. 91, no. 1.10.

⁶⁵ Ailincăi, Mirițoiu, Soficaru 2003, p. 308–309.

⁶⁶ Constantinescu, Mirițoiu 2008, p. 69–72, fig. 1.a–b, 2.a, 4.c–e.

⁶⁷ Ailincăi, Constantinescu 2008; Ailincăi, Mihail, Constantinescu 2013, p. 394.

FINAL CONSIDERATIONS

The burials inside settlements are, without a doubt, a special funerary phenomenon, documented worldwide in different periods and contexts. From the archaeological standpoint, these burials are skeletons or parts of human skeletons, articulated or not, deposited in deallocated habitat structures (pits, dwellings, etc.). One of the major problems of funerary archaeology is the understanding of the space and place of the burial. It's difficult to presume that the choice of funerary space was random, even if the rules by which communities established the area intended for burials are still little known⁶⁸. From this point of view, burials in settlements have been often regarded as deviation from standard and considered "macabre" finds, "atypical" and "irregular" burials related to "the social demotion of the dead"⁶⁹. Despite extraordinary diversity and variety, this conduct is, undoubtedly, a treatment of the human body after death.

Since this practice is many times documented at the same time with the existence of actual cemeteries, the hypotheses regarding the status of the individuals deposited in settlements are very diverse. The human bones found in domestic context have most of the times been considered results of human sacrifices or burials of persons with special status – slaves, prisoners of war, heretics, pariah, convicts, etc.⁷⁰ On the other hand, we ought to take into consideration the ethnographic and archaeological documented fact that human society made up numerous complex rituals of burial, some of them involving a series of manipulations and treatments of the body from the time of death until final deposition.

Not long ago, we drew attention on the existence of a complex attitude of Babadag populations towards the dead, based on specific practices of deposition, decomposition and manipulation of the dead in settlements. The finds recorded so far highlight only certain sequences of these complicated practices. In this regard, an anthropological approach of the burials from Bucu may complete the unknown data about the dead deposited in EIA settlements in the northern Balkans and, especially, in the Lower Danube region⁷¹. The finds from this site reinforce the idea that such practices existed over the entire areal ascribed to the Babadag culture, as well as the diversity of these cases by type of set-ups, number and state of representation of the dead, deposition method and association with certain objects (ceramic vessels).

⁶⁸ Motzoi-Chicideanu 2000, p. 109.

⁶⁹ See the two recently published papers Baray, Boulestin 2010; Müller-Scheeßel 2013 – that illustrates very clearly this phenomenon in Europe.

⁷⁰ See Boulestin 2010, p. 13 et seq.

⁷¹ Sîrbu 1994; Sîrbu 1997; Irimia 2003; Ailincăi 2008a.

Anthropological analyses, especially in the last decade, of individuals buried in EIA settlements at the Lower Danube have added new and important information regarding age, sex, stature, pathology, signs of violent death, perimortem interventions on the bones, etc. Though, in overall, no selection criteria (sex, age, social status, death is special circumstances) of the dead could be noticed⁷², the three analyzed subjects in this study strengthen the already existing opinion of the predominance of adult individuals in such burials⁷³.

Another important element is that, at this site, too, we have documented signs of violent death. *Individual 5* seems to have received *peri-* and *postmortem* treatment different from the other two individuals. At first glance, this treatment seems related to the sex of the individual, accentuated by the violent death; this skeleton is missing most osteological fragments from ancient times and is the only one with partially articulated bones (right arm bones).

Signs of activity (osteoarthritis and squatting facets on the tibia and talus) during his lifetime are more intense than in the case of female individuals. It exhibits more pronounced signs of osteoarthritis of the lower limbs (Fig. 8/1–3), which can be linked to more intensive use of these limbs compared to the other two individuals. In the case of the other individuals, except for the signs of hypoplasia, the pathological transformations we identified seem to be mainly age-related, more pronounced at *individual 4*, who most probably was the eldest, showing multiple signs of parturition. Thus, it's possible that the male individual had carried out more intense activities during his lifetime compared to the female individuals. It remains to be seen whether these observations are related with how the individual was killed and deposited *postmortem*.

Table 4

Cranial measurements
(Measurements after Buikstra, Ubelaker 1994, p. 74–84)

Individual no.	Ind. 2	Ind. 4	Ind. 5	Individual no.	Ind. 2	Ind. 4	Ind. 5
Sex	♀	♀	♂	Sex	♀	♀	♂
7 (ekm-ekm)	-	-	59	28 (go-go)	-	-	89
20 (b-l)	-	99	124	29 (kdl-kdl)	-	-	107
21 (l-o)	95.79	97.46	90	30 right	31.98	-	26.5
24 right	26.28	23.61	21.36	30 left	31.25	27.31	29
24 left	-	23.74	25.33	31 right	-	-	39
25 (id-gn)	36.29	-	22.5	31 left	-	44.13	-
26 right	-	-	23.5	32	-	48	48
26 left	-	-	23	33	-	72	72.5
27 right	-	14.37	9	34	-	138	123
27 left	-	10.92	9				

⁷² Ailincăi 2008a; Ailincăi 2013a.

⁷³ Ailincăi 2008a.

Table 5

Postcranial measurements of the female skeletons
(Measurements after Buikstra, Ubelaker 1994, p. 74–84)

	Ind. 2/ 4	Ind. 2/ 4		Ind. 2/ 4	Ind. 2/ 4		Ind. 2/ 4	Ind. 2/ 4
	right	Left		right	left		Right	left
Clavicle			Ulna			Tibia		
35	124.5/-	132/-	48	229.5/247	229/-	69	297/-	-/-
36	10.67/-	8.69/11.13	49	11.08/12	11.99/12.65	70	66/-	-/-
37	8.72/-	9.86/8.15	50	13.19/14.12	14.03/13.36	71	46/-	-/-
Humerus			51	200/-	201/-			
40	-/-	272.5/-	52	29/30	29.5/31	72	28.89/28.06	28.13/27.83
41	56/54	54/-	Sacrum			73	19.11/19.19	19.53/19.78
42	-/-	37.65/-	55	55.96/-		74	77/73	77/75
43	18.98/18.76	17.97/20.2	Femur			Fibula		
44	15.33/13.64	13.92/13.14	64	21.15/19.4	21.40/19.68	76	-/12.59	-/13.13
Radius			65	30.17/28.57	31.66/29.84	Calcaneus		
45	207/223	205.5/-	66	22.78/22.38	22.96/22.5	77	70/-	71/73
46	9.44/9.56	9.28/9.39	67	25.34/25.66	27.18/25.24	78	40/-	39/35
47	14.84/13.78	13.57/13.63	68	75/74	77/74			

Table 6

Postcranial measurements of the male skeletons
(Measurements after Buikstra, Ubelaker 1994, p. 74–84)

Measurements	Ind. 5	Ind. 5	Measurements	Ind. 5	Ind. 5	Measurements	Ind. 5	Ind. 5
	right	left		right	left		right	left
Clavicle			49	12.75	11.96	66	24.08	24.65
35	-	126	50	14.13	14.75	67	26.31	24.19
36	-	10.53	51	-	222.5	68	78	76
37	-	8.05	52	33	31.5	Tibia		
Humerus			Sacrum			69	350	345
40	303.5	303.5	55	42.48		70	-	-
41	54.5	54	Os coxae			71	47.5	-
42	39.64	38.19	56	205.5		72	31.58	32.52
43	19.75	19.03	57	149	148	73	20.78	19.47
44	14.64	13.8	Femur			74	81.5	83
Radius			60	402	401.5	Fibula		
45	-	229.5	61	400.5	401	75	330.5	-
46	11.45	12	62	70.5	69.5	76	15.37	16.36
47	13.11	12.66	63	39.65	38.78	Calcaneus		
Ulna			64	20.61	20.65	77	70	-
48	-	250	65	29.17	28.64			

The incidence of violent injuries varies from one site to another, but they exist in all the sites where anthropological analyses were made. Female and male individuals are affected, most of them adults or adolescents. It's interesting that the majority of the signs of violence affects especially the cranial bones, are lethal and seem to be caused by blunt or sharp objects.

DESPRE ÎNMORMÂNTĂRILE DIN AȘEZAREA APARTINÂND PERIOADEI TIMPURII A EPOCII FIERULUI DE LA BUCU – *POCHINĂ*, JUD. IALOMIȚA

REZUMAT

Rezumat: Cercetările arheologice întreprinse în situl de la Bucu – *Pochină*, în perioada 1989–2010 au evidențiat existența unei locuiri din perioada timpurie a epocii fierului, care poate fi atribuită culturii Babadag (sf. sec. XI – prima parte a sec. VIII a.Chr.). În această așezare au fost descoperite patru structuri de habitat care conțineau osemintele a cinci indivizi. În prezentul articol am încercat o analiză cât mai completă a acestor situații, prin prezentarea materialelor și a documentației arheologice, ca și prin analiza antropologică a trei dintre indivizii înmormântați în acest sit.

Studiul înmormântărilor de la Bucu completează datele cunoscute până în prezent despre defuncții depuși în așezările de la începutul epocii fierului din spațiul nord-balcanic și în special din zona Dunării de Jos. Descoperirile din acest sit întăresc ideea existenței acestor practici pe tot arealul atribuit culturii Babadag, dar și varietatea contextelor arheologice în care apar, atât din punctul de vedere al tipurilor de amenjări, numărului și stării de reprezentare a defuncțiilor, modului de depunere, cât și al asocierii cu anumite obiecte (vase și fragmente ceramice, oase de animale, resturi de construcții).

Cuvinte-cheie: perioada timpurie a epocii fierului, cultura Babadag, înmormântări în așezări, Dunărea de Jos, violență.

BIBLIOGRAPHY

- Ailincăi 2008a Ailincăi, S.C., *The Place for the Dead in Early and Middle Iron Age Lower Danube Area*, in Sîrbu, V., Vaida, L.D. (eds.), *Funerary Practices of the Bronze and Iron Ages in Central and South-Eastern Europe. Proceedings of the 9th International Colloquium of Funerary Archaeology, Bistrița, May 9th–11th, 2008*, Cluj–Napoca, p. 9–33.
- Ailincăi 2008b Ailincăi, S.C., *The Dead Among the Living in the Babadag Settlement from Niculițel – Cornet (Tulcea county, Romania)*, in Sîrbu, V., Ștefănescu, R. (eds.), *Funerary Practices in Central and Eastern Europe (10th c. BC – 3rd c. AD). Proceedings of the 10th International Colloquium of Funerary Archaeology, Brăila – Brașov*, p. 11–30.
- Ailincăi 2010a Ailincăi, S.C., *Noi considerații referitoare la cercetările arheologice efectuate în așezarea culturii Babadag de la Revărsarea – Dealul Tichilești, jud. Tulcea*, *Peuce S.N.* 8, p. 37–78.
- Ailincăi 2010b Ailincăi, S.C., *Începuturile epocii fierului în Dobrogea*, Ph D thesis, Jassy.
- Ailincăi 2013a Ailincăi, S.C., *Începuturile epocii fierului în Dobrogea. Cercetările arheologice de la Revărsarea, Isaccea, jud. Tulcea*, Brăila.
- Ailincăi 2013b Ailincăi, S.C., *Începuturile epocii fierului în Dobrogea*, *SCIVA* 64, 3–4, p. 223–292.
- Ailincăi, Constantinescu 2008 Ailincăi, S.C., Constantinescu, M., *O groapă cu oseminte umane descoperită în așezarea culturii Babadag de la*

- Ailincăi, Constantinescu forthcoming
 Ailincăi, S.C., Micu, C., Mihail, F. (eds.), *Omagiul lui Gavrilă Simion la a 80-a aniversare*, Tulcea, p. 121–131.
- Ailincăi, Constantinescu, M., *Living with the dead. Burials in Early Iron Age settlement at Enisala – Palanca, Tulcea county (South-Eastern Romania)*, *Sprawozdania Archeologiczne* 67 (forthcoming).
- Ailincăi, Dobrinescu 2006
 Ailincăi, S.C., Dobrinescu, C., *Așezarea din perioada timpurie a epocii fierului de la Țibrinu „La lac” (com. Mircea Vodă, jud. Constanța)*, *Istros* 13, p. 135–157.
- Ailincăi, Constantinescu, Adamescu 2014
 Ailincăi, S., Constantinescu, M., Adamescu, A. 2014, *Observații privind înmormântările hallstattiene timpurii din așezarea de la Suceveni – Stoborăni, jud. Galați*, *Peuce S.N.* 12, p. 269–288.
- Ailincăi, Mihail, Constantinescu 2013
 Ailincăi S.C., Mihail F., Constantinescu M., *Așezarea din prima epocă a fierului de la Enisala – Palanca. Cercetările arheologice din 2010*, in Ailincăi, S.C., Țârlea, A., Micu, C. (eds.), *Din preistoria Dunării de Jos. 50 de ani de la începutul cercetărilor de la Babadag (1962–2012). Actele conferinței Lower Danube Prehistory. 50 Years of Excavations at Babadag, Tulcea, September 20th–22nd*, Brăila, p. 387–460.
- Ailincăi, Mirițoiu, Soficaru 2003
 Ailincăi, S., Mirițoiu, N., Soficaru, A., *O groapă cu oseminte umane atribuită culturii Babadag descoperită în nivelul precolonial de la Orgame (com. Jurilovca, jud. Tulcea)*, *ArhMold* 26, p. 307–324.
- Ailincăi, Mirițoiu, Soficaru 2006
 Ailincăi, S., Mirițoiu, N., Soficaru, A., *A pit with human remains attributed to the Babadag culture discovered in pre-colonial level at Orgame*, in Mănușu-Adameșteanu, M. (ed.), *A la recherche d'une colonie. Actes du Colloque International. 40 ans de recherche archéologiques à Orgamé/Argamum*, București, p. 81–107.
- Ailincăi et alii 2006
 Ailincăi, S.C., Jugănar, G., Țârlea, A., Vernescu, M., *Early Iron Age Complexes with Human Remains from the Babadag Settlement*, *Peuce S.N.* 3–4, p. 77–108.
- Ailincăi et alii 2011
 Ailincăi S.C., Jugănar, G., Țârlea, A., Mihail, F., Vernescu, M., Ailincăi, A., *Noi date referitoare la așezarea culturii Babadag de la Enisala – Palanca, com. Sarichioi, jud. Tulcea. Cercetările arheologice din perioada 2003–2006*, *RA S.N.* 7, 1–2, p. 157–199.
- Alexandrescu 1978
 Alexandrescu, A.D., *Sepultures du Premier Âge du Fer a Zimnicea (dép. de Teleorman)*, *Dacia N.S.* 22, p. 115–124.
- Bach 1965
 Bach H., *Zur Berechnung der Körperhöhe aus den langen Gliedmaßenknochen weiblicher Skelette*, *AnthAnz* 20, p. 12–21.
- Baray, Boulestin 2010
 Baray, L., Boulestin, B. (eds.), *Morts anormaux et sépultures bizarres. Les dépôts humains en fosses circulaires ou en silos du Néolithique à l'âge du Fer*, Dijon.

- Barnett 1954
Barnett, C.H., *Squatting facets on the European talus*, J.Anat 88, p. 509–513.
- Baumann 1995
Baumann, V.H., *Așezări rurale antice în zona Gurilor Dunării. Contribuții arheologice la cunoașterea habitatului natural (sec. I–IV p. Chr.)*, Tulcea.
- Berciu 1939
Berciu, D., *Arheologia preistorică a Olteniei*, Craiova.
- Berciu, Comșa 1956
Berciu, D., Comșa, E. 1956, *Săpăturile de la Balta Verde și Gogoșu (1949 și 1950)*, MCA 2, p. 251–490.
- Boulestin 2010
Boulestin, B., *Problématique des dépôts humains dans les structures d'habitat désaffectées: introduction à la table ronde*, in Baray, L., Boulestin, B. (eds.), *Morts anormaux et sépultures bizarres. Les dépôts humains en fosses circulaires ou en silos du Néolithique à l'âge du Fer*, Dijon, p. 13–28.
- Boulle 2001
Boulle, E.-L., *Evolution of Two Human Skeletal Markers of the Squatting Position: A Diachronic Study from Antiquity to the Modern Age*, AJP. Anthropol 115, p. 50–56.
- Brothwell 1981
Brothwell, D.R., *Digging up bones. The excavation, treatment and study of human skeletal remains*, Oxford University Press, third edition, Oxford.
- Buikstra, Ubelaker 1994
Buikstra, J.E., Ubelaker, D.H., *Standards for data collection from human skeletal remains*, Arkansas Archaeological Survey Research Series 44, Fayetteville.
- Chicideanu 1986
Chicideanu, I., *Die Frühthrakische Kultur. Zur Bronzezeit in Südwestrumänien*, Dacia N.S. 30, 1–2, p. 7–47.
- Connell 2008
Connell, B., *Preservation and archaeological data*, in Powers, N. (ed.), *Human osteology method statement*, Museum of London, Published online March, p. 9–10.
- Connell, Rauxloh 2003
Connell B., Rauxloh P., *A rapid method for recording human skeletal data*, <http://www.museumoflondon.org.uk/NR/rdonlyres/61CC101E-B351-451B-857B-7A4479E78CC7/0/RapidMethodRecordingManual.pdf>
- Constantinescu, Mirițoiu 2008
Constantinescu, M., Mirițoiu, N., *Anthropological analysis of the human osteological remains from Niculițel – Cornet site*, in Sirbu, V., Ștefănescu, R. (eds.), *Funerary Practices in Central and Eastern Europe (10th c. BC – 3th c. AD)*, Brăila – Brașov, p. 69–83.
- Dragomir 1996
Dragomir, I.T., *Mormântul colectiv hallstättian de la Suceveni, județul Galați*, Danubius 16, p. 365–372.
- Duday 1995
Duday, H., *Anthropologie « de terrain » Archéologie de la mort*, in *La mort. Passé, Present, Conditionnel. Actes du Colloque de la Roche-sur-Yon*, Groupe vendéen d'Étude préhistorique, La Roche-sur-Yon, p. 33–58.
- Frere-Sautot 2006
Frere-Sautot, M-Ch. (coord.), *Des trous... Structures en creux pre-et protohistoriques. Actes du Colloque de Dijon et Baume-les-Messieurs, 24–26 Mars 2006*, Editions Monique Mergoil Montagnac.

- Gumă 1993 Gumă, M., *Civilizația primei epoci a fierului în S-E României*, B.Thr. 4, București.
- Hänsel 1976 Hänsel, B., *Beiträge zur regionalen und Chronologischen Gliederung der Älteren Hallstattzeit an der Unteren Donau*, vol. 1, 2, Bonn.
- Hartuche, Anastasiu 1992 Hartuche, N., Anastasiu, O., *Considerații asupra cercetărilor din așezarea Babadag de la Siliștea-Nazăru, județul Brăila*, Istros 6, p. 17–24, 343–361.
- Irimia 2003 Irimia, M., *Den Grabritus und die Grabrituale der Babadag-Kultur-Gemeinschaften betreffend*, Thracia 15, p. 251–268.
- Irimia, Conovici 1993 Irimia, M., Conovici, N., *Descoperiri hallstattiene în zona davei getice de la Satu Nou, com. Oltina, jud. Constanța*, Pontica 26, p. 51–114.
- Jugănaru 1997 Jugănaru, G., *Manifestări ale Primei Epoci a Fierului în Dobrogea (Descoperirile de la Garvăn-Mlăjitul Florilor jud. Tulcea)*, in Simion, G. (coord.), *Premier Age du Fer aux Bouches du Danube et dans les Régions autour de la Mer Noire. Actes du Colloque International, Septembre 1993*, Tulcea, p. 99–102.
- Jugănaru 2005 Jugănaru, G., *Cultura Babadag*, I, Constanța.
- Jugănaru, Ailincăi 2003 Jugănaru, G., Ailincăi, S., *Noi date referitoare la fortificația așezării hallstattiene de la Babadag (jud. Tulcea)*, Peuce S.N. 1, p. 51–62.
- László 1986 László, A., *Grupul Tămăoani. Asupra „orizontului” hallstattian cu ceramică incizată din sudul Moldovei*, MemAntiq 12–14, p. 65–91.
- László 1994 László, A., *Începuturile epocii fierului la est de Carpați*, B.Thr. 6, București.
- László 2003 László, A., *Bestattungssitten am Ende der Bronzezeit und am Anfang der Eisenzeit im Nord-Östlichen Karpatengebiet. Traditionen, Innovationen, Interferenzen*, in Vasić, R. (ed.), *Sahranjivanje u bronzano doba, Čačak*, p. 171–189.
- László 2006 László, A., *Sur les coutumes funéraires des populations du Bas-Danube au début de l'Âge du Fer*, in Lungu, V., Simion, G., Topoleanu, F. (eds.), *Pratiques funéraires et manifestations de l'identité culturelle (Âge du Bronze et Âge du Fer). Actes du IV^e Colloque International d'Archéologie Funéraire*, Tulcea, p. 105–116.
- Lăzurcă, Mănucu-Adameșteanu 1984 Lăzurcă, E., Mănucu-Adameșteanu, Gh., *Noi descoperiri arheologice la Enisala, jud. Tulcea*, MCA (a XIV-a Sesiune anuală de rapoarte, Tulcea, 1980), București, p. 146–156.
- Levițki 1994 Levițki, O., *Cultura Hallstattului canelat la răsărit de Carpați*, București.
- Loth, Ișcan 1989 Loth, S.R., Ișcan, M.Y., *Morphological assessment of age in the adult: the thoracic region*, in Ișcan, M.Y. (ed.), *Age Markers in the Human Skeleton*, Springfield, p. 105–135.

- Kašuba 2000 Kašuba, M.T., *Rannee Železo v lesostepi meždu Dnestrm i Siretom (Kultura Cozia – Saharna)*, Stratum 3, p. 241–488.
- Morintz 1964 Morintz, S., *Quelques problèmes concernant la période ancienne du Hallstatt au Bas Danube a la lumière des fouilles de Babadag*, Dacia N.S. 8, p. 101–118.
- Morintz 1986 Morintz, S., *Săpăturile de la Babadag, 1973–1974, 1977–1981*, MCA (a XVI-a Sesiune anuală de rapoarte, Vaslui, 1982), București, p. 58–64.
- Morintz 1987 Morintz, S., *Noi date și probleme privind perioadele hallstattiene timpurie și mijlocie în zona istro-pontică (Cercetările de la Babadag)*, TD 8, 1–2, p. 39–71.
- Morintz, Jugănaru 1995 Morintz, S., Jugănaru, G., *Raport privind săpăturile arheologice efectuate în Sectorul V al așezării hallstattiene de la Babadag (1991–1992)*, Peuce 11, p. 177–202.
- Morintz, Jugănaru, Munteanu 1995 Morintz, S., Jugănaru, G., Munteanu, M., *Așezarea din prima epocă a fierului de la Babadag, Cercetări arheologice în aria nord-tracă 1*, București, p. 222–235.
- Moscalu 1976 Moscalu, E., *Die Frühhallstattzeitliche Gräber von Meri*, TD 1, p. 77–86.
- Moscalu 1977–1979 Moscalu, E., *Mormintele tumulare hallstattiene timpurii de la Meri (com. Vedea, jud. Teleorman)*, MemAntiq 9–11, p. 163–169.
- Motzoi-Chicideanu 1999–2001 Motzoi-Chicideanu, I., *Ein neuer Fund vom Beginn der Hallstattzeit aus der kleinen Walachei*, Dacia N.S. 43–45, p. 197–229.
- Motzoi-Chicideanu 2000 Motzoi-Chicideanu, I., *Mormânt*, in Preda, C. (coord.), *Enciclopedia Arheologiei și Istoriei Vechi a României*, M–Q, București, p. 108–131.
- Müller-Scheeßel 2013 Müller-Scheeßel, N. (Hrsg.), *'Irreguläre' Bestattungen in der Urgeschichte: Norm, Ritual, Strafe...?, Akten der Internationalen Tagung in Frankfurt a. M. vom 3. bis 5. Februar 2012*, Rudolf Habelt GmbH, Bonn.
- Niculiță, Niciu 2014 Niculiță, I., Niciu, A., *Așezarea și necropola din prima epocă a fierului de la Saharna – Țiglaș*, Biblioteca Tyrageia 25, Chișinău.
- Păunescu, Rența 1993 Păunescu, A., Rența, E., *Contribution à la connaissance des habitats de la culture Coslogeni dans la Vallée de la Ialomița*, CCDJ 10, p. 193–197.
- Păunescu, Rența 1994 Păunescu, A., Rența, E., *Bucu – Pochină, jud. Ialomița*, CCA, campania 1993, Satu Mare, p. 9.
- Păunescu, Rența 1996 Păunescu, A., Rența, E., *Bucu – Pochină, jud. Ialomița*, CCA, campania 1995, Brăila, p. 16.
- Păunescu, Rența 1998 Păunescu, A., Rența, E., *Bucu – Pochină, jud. Ialomița*, CCA, campania 1997, Călărași, p. 10.
- Păunescu, Rența 1999 Păunescu, A., Rența, E., *Bucu – Pochină, jud. Ialomița*, CCA, campania 1998, Vaslui, p. 18.
- Păunescu, Rența 2000 Păunescu, A., Rența, E., *Bucu – Pochină, jud. Ialomița*, CCA, campania 1999, Deva, p. 21.
- Rența 2002 Rența, E., *Bucu, com. Bucu, jud. Ialomița*, CCA, campania 2001, Buziaș, p. 70–71.

- Rența 2003 Rența, E., *Bucu, com. Bucu, jud. Ialomița, Punct: Pochină*, CCA, campania 2002, Covasna, p. 63–64.
- Rența 2004 Rența, E., *Bucu, com. Bucu, jud. Ialomița, Punct: Pochină*, CCA, campania 2003, Cluj–Napoca, p. 62.
- Rența 2008 Rența, E., *Prima epocă a fierului pe cursul râului Ialomița*, Târgoviște.
- Rența, Coman 2005 Rența, E., Coman, R. *Bucu, com. Bucu, jud. Ialomița, Punct: Pochină*, CCA, campania 2004, Mangalia, p. 83–84.
- Rența, Coman 2006 Rența, E., Coman, R., *Bucu, com. Bucu, jud. Ialomița, Punct: Pochină*, CCA, campania 2005, Constanța, p. 98–100.
- Rența, Munteanu 2007 Rența, E., Munteanu, S., *Bucu, com. Bucu, jud. Ialomița, Punct: Pochină*, CCA, campania 2006, Tulcea, p. 85–87.
- Rența, Munteanu, Coman 2008 Rența, E., Munteanu, S., Coman, R., *Bucu, com. Bucu, jud. Ialomița, Punct: Pochină*, CCA, campania 2007, Iași, p. 57–58.
- Simion 2003 Simion, G., *Situl hallstattian de la Revărsarea–Tichilești*, în *Culturi Antice în zona Gurilor Dunării. Preistorie și Protoistorie*, vol. 1, Tulcea, p. 99–114.
- Sîrbu 1994 Sîrbu, V., *Sacrificii umane și practici funerare insolite în arealul tracic, în Hallstatt și La Tène*, Istros 7, p. 83–122.
- Sîrbu 1997 Sîrbu, V., *Sacrifices humains et pratiques funéraires insolites dans l'areal thrace du Hallstatt et La Tène*, în Simion, G. (coord.), *Premier Age du Fer aux Bouches du Danube et dans les Régions autour de la Mer Noire. Actes du Colloque International, Septembre 1993*, Tulcea, p. 193–221.
- Sîrbu, Ailincăi, Simion 2008 Sîrbu, V., Ailincăi, S.C., Simion, G., *Jijila–Cetățuie o așezare fortificată a culturii Babadag în nord-vestul Dobrogei*, Brăila.
- Sîrbu, Pandrea 1994 Sîrbu, V., Pandrea, S., *Cercetările arheologice de la Siliștea, Jud. Brăila*, Istros 7, p. 27–62.
- Steckel *et alii* 2006 Steckel, R.H., Larsen, C.S., Sciulli, P.W., Walker, P.L., *The Global History of Health Project data collection codebook*. Unpublished manuscript. Available at: http://global.sbs.ohio-state.edu/new_docs/Codebook-01-24-11-em.pdf
- Stodder 2008 Stodder, A.L., *Taphonomy and the nature of archaeological assemblages*, în Katzenberg, M.A., Saunders, S.R. (eds.), *Biological anthropology of the human skeleton*, second edition, Hoboken, New Jersey, p. 71–114.
- Stoyanov 1997 Stoyanov, T., *Early Iron Age Necropolis. Sboryanovo*, I, Sofia.
- Topoleanu, Jugănaru 1995 Topoleanu, F., Jugănaru, G., *Așezarea de tip Babadag de la Niculișel „Cornet” (jud. Tulcea). Săpăturile de salvare efectuate în 1988*, Peuce 11, p. 203–229.
- Ursulescu, Șandurschi 2004 Ursulescu, N., Șandurschi, P., *Une tombe à inhumation trouvée à Prăjeni (dép. de Botoșani*,

- Vulpe 2008 *Roumanie) et le début de la période hallsttienne dans la région des Carpates Septentrionaux*, PZ 79, 1, p. 45–56.
 Vulpe, A., *Zu den Grabsitten der Älteren Hallstattzeit in Rumänien*, in Verse, F., Knoche, B., Graefe, J., Hohlbein, M., Schierhold, K., Sieman, C., Uckelmann, M., Woltermann, G. (eds.), *Durch die Zeiten ... Festschrift für Albrecht Jockenhövel zum 65. Geburtstag*, Rahden, p. 269–273.
- White, Black, Folkens 2012 White, T.D., Black, M.T., Folkens, P.A., *Human osteology. Third edition*, San Diego.

EXPLICAȚIA FIGURILOR

- Fig. 1. Situl de la Bucu – *Pochină*, jud. Ialomița.
 Fig. 2. Planul cercetărilor arheologice din situl de la Bucu – *Pochină*, jud. Ialomița (după Rența 2008).
 Fig. 3. Planul și profilul gropii 1, S XVIII (după Rența 2008).
 Fig. 4. Ceramică descoperită în gr. 1, S XVIII.
 Fig. 5. Groapa 1, S LXV/2006.
 Fig. 6. Bucu – *Pochină*, bordeiul nr. 12.
 Fig. 7. 1. Vedere din norma superioară a craniului *individului* 5 (punctat este reprezentată zona unde presupunem că a venit lovitura; săgețile negre indică fracturile radiante, rezultat al loviturii primite); 2. vedere endocraniană a craniului *individului* 5 (săgețile negre indică zona exfoliată din os, ca urmare a loviturii).
 Fig. 8. 1. Vedere dinspre posterior a articulației piciorului drept; 2. vedere dinspre medial a rotulei drepte; 3. talusul și calcaneul drept al *individului* 5 (săgețile albe indică dezvoltarea osteofitelor marginale pe epifize și a enthesofitelor pe articulația tendonului lui Ahile).
 Tabel 1. Bucu. Sexe, vârste, staturi și inventare.
 Tabel 2. Bucu. Distribuția cariilor și abceselor dentare (scor 1 – carii ocluse; 2 – carii interproximale; 3 – abcese dentare).
 Tabel 3. Bucu. Fațete articulare suplimentare la tibie (1 – fațetă articulară medială; 2 – fațetă articulară laterală) și talus (3 – fațetă articulară medială; 4 – fațetă articulară laterală; 5 – prelungire anterioară a suprafeței articulare mediale; 6 – extensie medială a suprafeței trochleare). Scoruri 0 – lipsa observației; 1 – lipsa trăsăturii; 2 – prezența trăsăturii.
 Tabel 4. Măsurători schelet cranian.
 Tabel 5. Măsurători schelet post-cranian al scheletelor de sex feminin.

ABREVIERI

- AARMSI – Analele Academiei Române. Memoriile Secțiunii Istorice, București
ACMISB – Anuarul Comisiunii Monumentelor Istorice. Secțiunea din Basarabia
ACSS – Ancient Civilizations from Scythia to Siberia, Roma/Moscova
ActaMN – Acta Musei Napocensis, Cluj–Napoca
ActaMP – Acta Musei Porolissensis, Zalău
AÉ – Anné Épigraphique, Paris
AIIA Iași – Anuarul Institutului de Istorie și Arheologie, Iași
AISC – Anuarul Institutului de Studii Clasice, Cluj–Napoca
AJA – American Journal of Archaeology, Boston
AJPAntropol – American Journal of Physical Anthropology
AnȘUIași – Analele Științifice ale Universității „Al.I. Cuza”, Iași
AnthAnz – Anthropologischer Anzeiger, Berlin
AO – Arheologhičeskie Otkrytija, Moscova
Apulum – Acta Musei Apulensis, Alba Iulia
APURSR – Arheologhični pamijatki URSR, Kiev
ArheologijaKiev, Arheologija. Institut Arheologii, Kiev
ArhMold – Arheologia Moldovei, Iași – București
ArhSSSR – Arheologija SSSR, Moscova
ArhSSSR–SAI – Arheologija SSSR. Svod arheologičeskikh istočnikov, Moscova
Banatica – Banatica, Muzeul județean Reșița, Reșița
BEO – Bulletin d'Études Orientales, Damasc
BSS – Black Sea Studies. The Danish National Research Foundations Centre for Black Sea Studies, University of Aarhus
B.Thr. – Biblioteca Thracologica
Bulletin of archaeology – Bulletin of archaeology. The University of Kanazawa, Kanazawa
CAD – The Assyrian Dictionary of the Oriental Institute of the University of Chicago, Chicago
CaieteARA – Caietele ARA, Revistă de Arhitectură, Restaurare și Arheologie, Asociația ARA, București
CCA – Cronica Cercetărilor Arheologice din România, București
CCDJ – Cultură și Civilizație la Dunărea de Jos, Călărași
Chiron – Mitteilungen der Kommission für Alte Geschichte und Epigraphik des Deutschen Archäologischen Instituts, München
CIL – *Corpus Inscriptionum Latinarum*, Berlin
Classica et Christiana – Classica et Christiana, Centrul de Studii Clasice și Creștine al Facultății de Istorie a Universității „Al.I. Cuza”, Iași
CNA – Cronica numismatică și arheologică, București
CRAI – Comptes-rendus des séances de l'Académie des Inscriptions et Belles-Lettres, Paris
Dacia – Dacia. Recherches et Découvertes Archéologiques en Roumanie, București; serie nouă N.S. (nouvelle série); Revue d'Archéologie et d'Histoire Ancienne, București
Danubius – Danubius. Revista Muzeului de Istorie, Galați
Drevnosti – Drevnosti, Moscova
EME – Εγκυκλοπαίδεια Μείζονος Ελληνισμού, Εύξεινος Πόντος. Digital Encyclopaedia of the Hellenic World
EphemDR – Ephemeris Dacoromana. Annuario della Scuola Romana di Roma, Roma –București
SCIVA, tomul 66, nr. 1–2, București, 2015, p. 175–177

- EphemNap – Ephemeris Napocensis, Cluj–Napoca
 ErdMúz – Erdélyi Múzeum, Kolozsvár/Cluj(–Napoca)
 HPS – Hungarian Polis Studies, Debrecen
 IAK – Izvestija Arheologhičeskoj Komissii, Sankt-Petersburg
 ILD – C. C. Petolescu, *Inscripții latine din Dacia*, București, 2005
 IMF – Izvestija Moldavskogo filiala AN SSSR, Chișinău
 IOSPE – B. Latyshev, *Inscriptiones Antiquae Orae Septentrionalis Ponti Euxini, Graecae et Latinae*, vol. 2, Petropolis, 1916
 Iran – Iran. Journal of the British Institute of Persian Studies
 Istros – Istros. Buletinul Muzeului Brăilei. Studii, comunicări, note, Brăila
 Izvestija Sofia – Izvestija na Arheologhičeskija Institut, Sofia
 J.Anat – Journal of Anatomy
 J.Anthropol.Archaeol – Journal of Anthropological Archaeology
 JUH – Journal of Urban History
 KAGSP – Kul'tura Anticnyh Gorodov Severnogo Pričernomorja
 Korunk – Korunk, Cluj–Napoca
 KSIA – Kratkie soobščeniija Instituta arheologhii SSSR, Moscova
 KSIAU – Kratkie soobščeniija Instituta arheologhii AN USSR, Kiev
 KSOGAM – Kratkie soobščeniija o polevyh arheologhičeskikh issledovanijah Odesskogo arheologhičeskogo muzeja, Odessa
 Latomus – Latomus. Revue d'études latines, Bruxelles
 MASP – Materialy po arheologhii Severnogo Pričernomorja, Odessa
 MCA (Materiale) – Materiale și Cercetări Arheologice, București
 MemAntiq – Memoria Antiquitatis, Piatra Neamț
 MIA – Materialy i Issledovanija po Arheologhii SSSR, Moscova/Leningrad (Sankt- Petersburg)
 NE – Numizmatika i Epigrafica, Moscova
 Pallas – Pallas. Revue d'études antiques, Toulouse
 Peuce – Peuce, Studii și cercetări de istorie și arheologie, Institutul de Cercetări Eco-Muzeale, Tulcea
 PIR² – *Prosopographia Imperii Romani*, Berlin, Leipzig
 Pontica – Pontica. Studii și materiale de istorie, arheologie și muzeografie, Muzeul de Istorie Națională și Arheologie, Constanța
 Publications in Classical Philology – Publications in Classical Philology, University of California, Berkeley
 PZ – Prähistorische Zeitschrift, Leipzig – Berlin
 RA – Revista Arheologică, Chișinău
 REA – Revue des Études Anciennes, Université Michel de Montaigne, Bordeaux 3
 RELat – Revista de Estudios Latinos, Madrid
 REMMM – Revue des mondes musulmans et de la Méditerranée, Paris
 Renaissanceforum – Renaissanceforum. Journal of Renaissance Studies, Aarhus
 RITL – Revista de istorie și teorie literară, București
 RMD – M.M. Roxan, *Roman Military Diplomas*, 2 vol., Londra, 1978 și 1985
 RMPH – Rheinisches Museum für Philologie, Köln
 SAI – Studii și Articole de Istorie, București
 Sargetia – Sargetia, Acta Musei regionalis Devensis, Deva
 SCIV(A) – Studii și Cercetări de Istorie Veche și Arheologie, București
 SCN – Studii și Cercetări de Numismatică, București
 SMIM – Studii și Materiale de Istorie Medie, București
 SNUNK – Sbornik za narodni umotvorenija, nauka i knižnina, Sofia
 SovArch – Sovetskaja Arheologija, Moscova
 SP – Studii de Preistorie, București

Sprawozdania Archeologiczne – Sprawozdania Archeologiczne, Instytut Archeologii i Etnologii,
Polikiej Akademii Nauk, Warszawa
SSPK – Starožitnosti Stepovogo Pričernomorja ta Krimu, Zaporožie
StCl – Studii Clasice, București
StComCaransebeș – Studii și Comunicări Caransebeș
Stratum – Stratum, Chișinău/Sankt-Petersburg/Odessa/București
StratumP – Stratum Plus, Chișinău/Sankt-Petersburg/Odessa/București
Syria – Syria. Revue d'art oriental et d'archéologie, Beirut
TD – Thraco-Dacica, București
TGIM – Trudy Gosudarstvennogo Istoriceskogo muzeja, Odessa
Thracia – Thracia, Sofia
Tibiscum – Muzeul Banatului, Timișoara
Transactions of the Oriental Ceramic Society – Transactions of the Oriental Ceramic Society, Londra
TSP – Terrakoty Severnogo Pričernomorja, Moscova
VDI – Vestnik Drevnej Istorii, Moscova
Vestigia – Vestigia. Deutsches Archäologisches Institut. Kommission für Alte Geschichte
und Epigraphik, München
VNU (ist.) – Vestnik Nižegorodskogo Universiteta. Istorija, Nižnij Novgorod
VOMN – Vestnik Odesskogo Muzeja Numizmatiki, Odessa
WMMÉ – A Wosinsky Mór Múzeum Évkönyve, Szekszárd
ZOAo – Zapiski Odesskogo Arheologičeskogo Obščestva, Odessa
ZOOID – Zapiski Odesskogo Obščestva Istorii o Drevnostej, Odessa
ZPE – Zeitschrift für Papyrologie und Epigraphik, Bonn
ŽMNP – Žurnal Ministerstva Nardonogo Prosveščeniija, Sankt Petersburg/Kiev

ERATĂ

Într-un articol semnat de Emilian Teleaga, *Pecetea lui Skyles și tumulii fastuoși de la Agighiol și Cugir. Omisiune și falsificare în fondarea mitului „strămoșilor” românilor, geto-dacii*, apărut în SCIVA, 65, 3–4, 2014, p. 295–318, din vina autorului, s-au strecurat două regretabile erori. La cererea acestuia, numărul actual al revistei conține următoarea erată:

La p. 300, în loc de: „Păreră exprimată de Meljukova a fost întărită de Alexandru Vulpe. El a localizat cele cinci râuri secundare scitice ale lui Herodot între Prut și Siret, corespunzător graniței traco-scite”, se va citi: „Păreră exprimată de Meljukova a fost întărită de Alexandru Vulpe. El ilustrează trei dintre cele cinci râuri secundare scitice ale lui Herodot între Prut și Siret, dar le localizează în bazinul Siretului”.

La p. 301, nota 29 – „Rezultatele finale sunt publicate într-un articol în două părți din 2014 (Teleaga, Soficaru, Bălășescu 2014; Teleaga *et alii* 2014)”, se va citi astfel: „Rezultatele finale au fost înaintate spre publicare într-un articol în două părți din 2014 (Teleaga, Soficaru, Bălășescu 2014; Teleaga *et alii* 2014)”.